



PROJECT REFERENCES IN THAILAND

ท้อ PP-R ยอดขาย **อันดับ 1**
ของประเทศไทย

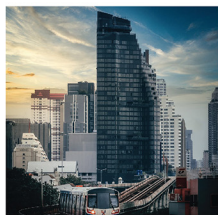




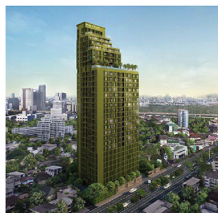
Project : SUPALAI RIVA GRAND RAMA3
Type : Condominium
Project Completed : 2021
Location : Bangkok
Application : Main&Branch CWS, HWS
Pipe Series : SDR 11, SDR 6, PN 20 MF
Remark : Newly Built



Project : OKA HUAS SUKHUMVIT 36
Type : Condominium, 47 floors
Project Completed : 2021
Location : Bangkok
Application : CWS, HWS
Pipe Series : SDR 11, SDR 6
Remark : Newly Built



Project : IDEO Q VICTORY
Type : Condominium
Project Completed : 2020
Location : Bangkok
Application : CWS
Pipe Series : SDR 11, SDR 6 PN 20 MF
Remark : Newly Built



Project : METRIS LADPRAO
Type : Condominium
Project Completed : 2020
Location : Bangkok
Application : CWS
Pipe Series : SDR 11, SDR 6
Remark : Newly Built



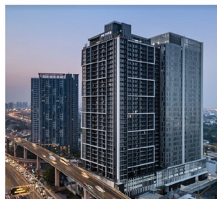
- Project** : LA CITTA DELRE THONGLOR 16
Type : Condominium, 8 floors
Project Completed : 2020
Location : Bangkok
Application : CWS, HWS
Pipe Series : SDR 11, SDR 6
Remark : Newly Built



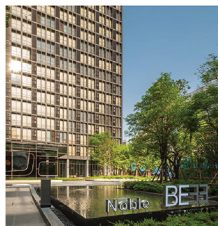
- Project** : THE RICH PLOENCHIT - NANA
Type : Condominium, 32 floors
Project Completed : 2020
Location : Bangkok
Application : HWS
Pipe Series : SDR 6
Remark : Newly Built



- Project** : QUINN SUKHUMVIT 101
Type : Condominium, 31 floors
Project Completed : 2020
Location : Bangkok
Application : CWS, HWS
Pipe Series : SDR 11, SDR 6
Remark : Newly Built



- Project** : METRIS RAMA9
Type : Condominium
Project Completed : 2020
Location : Bangkok
Application : CWS
Pipe Series : SDR 11, SDR 6
Remark : Newly Built



Project : NOBLE BE 33
Type : Condominium, 31 floors
Project Completed : 2020
Location : Bangkok
Application : CWS
Pipe Series : SDR 11
Remark : Newly Built



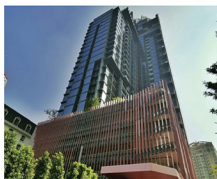
Project : ASHTON ASOKE - RAMA 9
Type : Condominium
Project Completed : 2020
Location : Bangkok
Application : CWS, HWS
Pipe Series : SDR 11, SDR 6
Remark : Newly Built



Project : ELIO SATHORN - WUTTHAKAT
Type : Condominium
Project Completed : 2020
Location : Bangkok
Application : CWS
Pipe Series : SDR 11
Remark : Newly Built



Project : THE LOFT SILOM
Type : Condominium, 37 floors
Project Completed : 2020
Location : Bangkok
Application : CWS
Pipe Series : SDR 11, SDR 6
Remark : Newly Built



Project : LAVIQ SUKHUMVIT
Type : Condominium, 33 floors
Project Completed : 2020
Location : Bangkok
Application : Main&Branch CWS, HWS
Pipe Series : SDR 11, SDR 6, SDR 7.4
Remark : Newly Built



Project : CHEWATHAI KASET - NAWAMIN
Type : Condominium, 25 floors
Project Completed : 2020
Location : Bangkok
Application : Main CWS
Pipe Series : SDR 11, SDR 6
Remark : Newly Built



Project : MARU EKKAMAI 2
Type : Condominium, 33 floors
Project Completed : 2020
Location : Bangkok
Application : Main&Branch CWS, HWS
Pipe Series : SDR 11, SDR 6
Remark : Newly Built



Project : RICH PARK TERMINAL @ PHAHONYOTHIN 59
Type : Condominium, 14 floors
Project Completed : 2020
Location : Bangkok
Application : CWS
Pipe Series : SDR 11
Remark : Newly Built



Project : IDEO RATCHADA-SUTTHISAN
Type : Condominium, 24 floors
Project Completed : 2020
Location : Bangkok
Application : CWS
Pipe Series : SDR 11
Remark : Newly Built



Project : CELES ASOKE
Type : Condominium, 40 floors
Project Completed : 2020
Location : Bangkok
Application : CWS
Pipe Series : SDR 11, SDR 6
Remark : Newly Built



Project : THE RESERVE 61 HIDEAWAY
Type : Condominium, 7 floors
Project Completed : 2020
Location : Bangkok
Application : CWS
Pipe Series : SDR 11, SDR 6
Remark : Newly Built



Project : NOBLE BE 19
Type : Condominium, 48 floors
Project Completed : 2020
Location : Bangkok
Application : Main&Branch CWS, HWS
Pipe Series : SDR 11, SDR 6 PN 20 MF
Remark : Newly Built



Project : THE ESSE SUKHUMVIT 36
Type : Condominium, 43 floors
Project Completed : 2020
Location : Bangkok
Application : CWS, HWS
Pipe Series : SDR 11, SDR 6
Remark : Newly Built



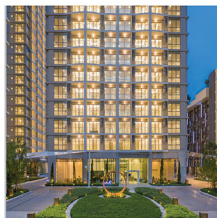
Project : THE LINE PHAHON - PRADIPAT
Type : Condominium, 46 floors
Project Completed : 2020
Location : Bangkok
Application : CWS, HWS
Pipe Series : SDR 6
Remark : Newly Built



Project : THE ESSE AT SINGHA COMPLEX
Type : Condominium, 39 floors
Project Completed : 2020
Location : Bangkok
Application : CWS, HWS
Pipe Series : SDR 11, SDR 6
Remark : Newly Built



Project : THE RESERVE PHAHOL - PRADIPAT
Type : Condominium, 25 floors
Project Completed : 2020
Location : Bangkok
Application : CWS, HWS
Pipe Series : SDR 6
Remark : Newly Built



- Project** : SUPALAI ORIENTAL SUKHUMVIT 39
Type : Condominium, 25 floors
Project Completed : 2020
Location : Bangkok
Application : CWS, HWS
Pipe Series : SDR 11, SDR 6
Remark : Newly Built



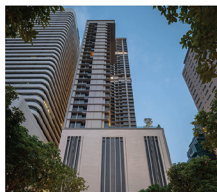
- Project** : THE BANGKOK SAB CONDOMINIUM
Type : Condominium
Project Completed : 2020
Location : Bangkok
Application : CWS
Pipe Series : SDR 11
Remark : Renovated



- Project** : BIO HOUSE SUKHUMVIT 39
Type : Condominium, 22 floors
Project Completed : 2020
Location : Bangkok
Application : CWS, HWS
Pipe Series : SDR 11, SDR 6
Remark : Renovated



- Project** : MARU LADPRAO
Type : Condominium
Project Completed : 2020
Location : Bangkok
Application : CWS
Pipe Series : SDR 11, SDR 6
Remark : Newly Built



Project : THE ESSE ASOKE
Type : Condominium, 55 floors
Project Completed : 2019
Location : Bangkok
Application : CWS, HWS
Pipe Series : SDR 11, SDR 6
Remark : Newly Built



Project : THE LINE SUKHUMVIT 101
Type : Condominium, 37 floors
Project Completed : 2019
Location : Bangkok
Application : CWS, HWS
Pipe Series : SDR 11, SDR 6
Remark : Newly Built



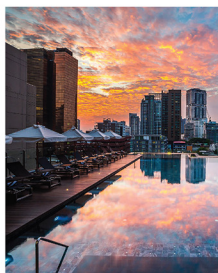
Project : ASPIRE SUKHUMVIT - ONNUT
Type : Condominium, 8 floors (3 Towers)
Project Completed : 2019
Location : Bangkok
Application : CWS
Pipe Series : SDR 11
Remark : Newly Built



Project : MUNIQ SUKHUMVIT 23
Type : Condominium
Project Completed : 2019
Location : Bangkok
Application : CWS
Pipe Series : SDR 11, SDR 6
Remark : Newly Built



Project : BAAN PATHUMWAN
Type : Condominium
Project Completed : 2019
Location : Bangkok
Application : CWS
Pipe Series : SDR 11, SDR 6
Remark : Renovated



Project : SKY VIEW
Type : Condominium, 25 floors
Project Completed : 2019
Location : Bangkok
Application : CWS
Pipe Series : SDR 11, SDR 6
Remark : Newly Built



Project : THE SAINT
Type : Condominium, 33 floors
Project Completed : 2019
Location : Bangkok
Application : CWS
Pipe Series : SDR 11, SDR 6
Remark : Newly Built



Project : SUPALAI LITE
RATCHADA - NARATHIWAS - SATHORN
Type : Condominium, 27 floors
Project Completed : 2019
Location : Bangkok
Application : CWS, HWS
Pipe Series : SDR 11, SDR 6
Remark : Newly Built



- Project** : VILLA RATCHATHEWI
Type : Condominium, 24 floors
Project Completed : 2019
Location : Bangkok
Application : CWS
Pipe Series : SDR 6
Remark : Renovated



- Project** : สอนกรังพยับ แพนชั่น
Type : Condominium
Project Completed : 2019
Location : Bangkok
Application : CWS
Pipe Series : SDR 11, SDR 6
Remark : Renovated



- Project** : THE PARKLAND PHETKASEM 56 (TOWER C)
Type : Condominium, 32 floors
Project Completed : 2019
Location : Bangkok
Application : CWS
Pipe Series : SDR 11, SDR 6
Remark : Newly Built



- Project** : PRESTIGE TOWER
Type : Condominium, 26 floors
Project Completed : 2019
Location : Bangkok
Application : CWS
Pipe Series : SDR 11, SDR 6
Remark : Renovated



- Project** : THE POLITAN RIVE (PHASE 2)
Type : Condominium, 8 floors
Project Completed : 2018
Location : Bangkok
Application : HWS
Pipe Series : SDR 6
Remark : Newly Built



- Project** : THE LOFTS ASOKE
Type : Condominium, 37 floors
Project Completed : 2018
Location : Bangkok
Application : CWS
Pipe Series : SDR 11
Remark : Newly Built



- Project** : AJ
Type : Condominium, 8 floors
Project Completed : 2019
Location : Bangkok
Application : CWS
Pipe Series : SDR 11
Remark : Newly Built



- Project** : DCON PRIME
Type : Condominium, 38 floors
Project Completed : 2018
Location : Bangkok
Application : Main Riser
Pipe Series : SDR 6
Remark : Newly Built



- Project** : EIGHT THONGLOR RESIDENCE
Type : Condominium, 34 floors
Project Completed : 2018
Location : Bangkok
Application : CWS
Pipe Series : SDR11, SDR6
Remark : Renovated



- Project** : ASHTON SILOM
Type : Condominium, 48 floors
Project Completed : 2018
Location : Bangkok
Application : HWS
Pipe Series : SDR 6
Remark : Newly Built



- Project** : THE NEST SUKHUMVIT 22
Type : Condominium, 8 floors
Project Completed : 2017
Location : Bangkok
Application : CWS, HWS
Pipe Series : SDR 11, SDR 6
Remark : Newly Built



- Project** : PRODIGY PHETKASEM 62
Type : Condominium
 Tower A 31 Floors, Tower B 33 Floors
Project Completed : 2017
Location : Bangkok
Application : CWS, HWS
Pipe Series : SDR 11, SDR 6
Remark : Newly Built



Project : SUPREME LEGEND NANGLINCHEE
Type : Condominium, 7 floors
Project Completed : 2017
Location : Bangkok
Application : CWS, HWS
Pipe Series : SDR 11, SDR 6
Remark : Newly Built



Project : FLORA VILLE PATTANAKARN
Type : Condominium, 32 floors
Project Completed : 2016
Location : Bangkok
Application : CWS
Pipe Series : SDR 11, SDR 6
Remark : Renovated



Project : BAAN KASEMSAN 1
Type : Condominium, 24 floors
Project Completed : 2015
Location : Bangkok
Application : CWS
Pipe Series : SDR 11, SDR 6
Remark : Renovated



Project : BAAN ISSARA BANGNA
Type : Village, 3 floors
Project Completed : 2020
Location : Bangkok
Application : CWS
Pipe Series : SDR 6
Remark : Newly Built



Project : VANA RESIDENCE RAMA 9 - SRINAKARIN
Type : Village, 3 floors
Project Completed : 2020
Location : Bangkok
Application : CWS, HWS
Pipe Series : SDR 11, SDR 6
Remark : Newly Built



Project : LADAWAN RATCHAPHRUEK - PINKLAO
Type : Village, 2-3 floors
Project Completed : 2018
Location : Bangkok
Application : CWS, HWS
Pipe Series : SDR 11, SDR 6 Fiber
Remark : Newly Built



Project : LADAWAN BANGNA
Type : Village, 2-3 floors
Project Completed : 2016
Location : Bangkok
Application : HWS
Pipe Series : SDR 6 Fiber
Remark : Newly Built



Project : CHATRIUM HOTEL PATHUMWAN
Type : Hotel, Service Apartment, 32 floors
Project Completed : Under Construction
Location : Bangkok
Application : CWS
Pipe Series : SDR 11
Remark : Newly Built



Project : ASTRA SKY RIVER
Type : Hotel, 17 floors
Project Completed : 2021
Location : Chiang Mai
Application : CWS
Pipe Series : SDR 11, SDR 6
Remark : Newly Built



- Project** : CHIANGMAI GRANDVIEW
Type : Hotel, 6 floors
Project Completed : 2021
Location : Chiang Mai
Application : CWS
Pipe Series : SDR 11, SDR 6
Remark : Newly Built



- Project** : MAY FLOWER GRANDE HOTEL PHITSANULOK
Type : Hotel, 6 floors
Project Completed : 2021
Location : Phitsanulok
Application : CWS
Pipe Series : SDR 11, SDR 6
Remark : Newly Built



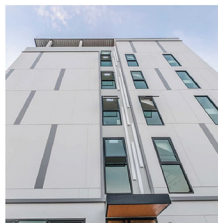
- Project** : CHIANG MAI TRAVEL LODGE HOTEL
Type : Hotel, 4 floors
Project Completed : 2021
Location : Chiang Mai
Application : CWS
Pipe Series : SDR 11, SDR 6
Remark : Newly Built



- Project** : MALADEE HOTEL
Type : Hotel, 4 floors
Project Completed : 2020
Location : Chiang Mai
Application : CWS
Pipe Series : SDR 11, SDR 6
Remark : Newly Built



Project : RICHMOND HOTEL
Type : Hotel
Project Completed : 2020
Location : Nonthaburi
Application : CWS
Pipe Series : SDR 11, SDR 6
Remark : Newly Built



Project : DON MUANG HOTEL (BUILDING A)
Type : Hotel
Project Completed : 2020
Location : Bangkok
Application : CWS
Pipe Series : SDR 11
Remark : Newly Built



Project : TOPLAND HOTEL
Type : Hotel, 9 floors
Project Completed : 2020
Location : Phitsanulok
Application : CWS
Pipe Series : SDR 11, SDR 6
Remark : Renovated



Project : WINDSOR HOTEL
Type : Hotel
Project Completed : 2020
Location : Bangkok
Application : CWS, HWS
Pipe Series : SDR 6
Remark : Renovated



Project : MIAMI HOTEL, SUKHUMVIT 13 PHASE 1
Type : Hotel, 4 floors
Project Completed : 2020
Location : Bangkok
Application : CWS, HWS
Pipe Series : SDR 11, SDR 6
Remark : Renovated



Project : โรงแรมเชียงใหม่
Type : Hotel, 3 floors
Project Completed : 2020
Location : Chiangmai
Application : CWS
Pipe Series : SDR 11, SDR 6
Remark : Newly Built



Project : GRACE HOTEL
Type : Hotel, 4 floors
Project Completed : 2020
Location : Bangkok
Application : CWS
Pipe Series : SDR 11
Remark : Renovated



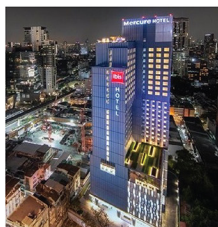
Project : KITSCH HOTEL SUITE
Type : Hotel
Project Completed : 2020
Location : Bangkok
Application : CWS, HWS
Pipe Series : SDR 11, SDR 6
Remark : Renovated



Project : NOVOTEL SUITES BANGKOK SUKHUMVIT 34
Type : Hotel
Project Completed : 2020
Location : Bangkok
Application : CWS, HWS
Pipe Series : SDR 11, SDR 6
Remark : Newly Built



Project : BANJAN VILLA
Type : Hotel, 8 floors
Project Completed : 2019
Location : Surat Thani
Application : CWS
Pipe Series : SDR 6
Remark : Newly Built



Project : MERCURE IBIS BANGKOK SUKHUMVIT 24 (MI 4)
Type : Hotel
Project Completed : 2019
Location : Bangkok
Application : CWS
Pipe Series : SDR 11, SDR 6
Remark : Newly Built



Project : CARLTON HOTEL
Type : Hotel
Project Completed : 2019
Location : Bangkok
Application : CWS
Pipe Series : SDR 11, SDR 6
Remark : Newly Built



Project : RAYONG LUXURY HOTEL
Type : Hotel
Project Completed : 2019
Location : Rayong
Application : CWS
Pipe Series : SDR 11, SDR 6
Remark : Newly Built



Project : IBIS HOTEL RATCHADA
Type : Hotel, 12 floors
Project Completed : 2018
Location : Bangkok
Application : CWS, HWS
Pipe Series : SDR 11, SDR 6
Remark : Newly Built



Project : THE PROUD HOTEL PATTAYA
Type : Hotel
Project Completed : 2018
Location : Chonburi
Application : CWS
Pipe Series : SDR 11
Remark : Newly Built



Project : KAO YAI GRANDVIEW RESORT HOTEL
Type : Hotel
Project Completed : 2018
Location : Prachin Buri
Application : CWS, HWS
Pipe Series : SDR 11, SDR 6
Remark : Newly Built



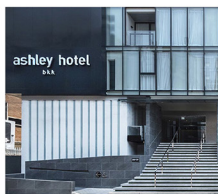
- Project** : JAZZOTEL HOTEL
Type : Hotel, 16 floors
Project Completed : 2018
Location : Bangkok
Application : CWS, HWS
Pipe Series : SDR 11, SDR 6
Remark : Newly Built, Renovated



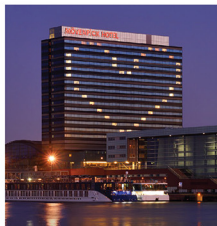
- Project** : METROPOLE HOTEL PHUKET
Type : Hotel, 18 floors
Project Completed : 2018
Location : Phuket
Application : CWS, HWS
Pipe Series : SDR 11, SDR 6
Remark : Renovated



- Project** : I CHAPTER HOTEL SUVARNABHUMI
Type : Hotel, 8 floors
Project Completed : 2018
Location : Bangkok
Application : CWS, HWS fiber
Pipe Series : SDR 11, SDR 6
Remark : Newly Built



- Project** : ASHLEY HOTEL BKK
Type : Hotel, 8 floors
Project Completed : 2018
Location : Bangkok
Application : CWS
Pipe Series : SDR 6
Remark : Newly Built



- Project** : MOVENPICK HOTEL SUKHUMVIT 15
Type : Hotel, 8 floors
Project Completed : 2017
Location : Bangkok
Application : CWS, HWS
Pipe Series : SDR 11, SDR 6
Remark : Newly Built



- Project** : KRONOS SATHORN TOWER
Type : Office Building, 28 floors
Project Completed : 2021
Location : Bangkok
Application : CWS, HWS
Pipe Series : SDR 11, SDR 6
Remark : Newly Built



- Project** : HEAD OFFICE, BANGKOK INSURANCE BUILDING
Type : Office Building, 19 floors
Project Completed : 2021
Location : Bangkok
Application : CWS
Pipe Series : SDR 11, SDR 6
Remark : Newly Built



- Project** : RASA TOWER
Type : Office Building, 29 floors
Project Completed : 2021
Location : Bangkok
Application : CWS
Pipe Series : SDR 11
Remark : Newly Built



- Project** : อาคารสำนักงานโรงพยาบาลเทพศิรินทร์
Type : Office Building, 5 floors
Project Completed : 2021
Location : Chiang Mai
Application : CWS
Pipe Series : SDR 11, SDR 6
Remark : Newly Built



- Project** : PRIMO ชั้น 8
Type : Office Building
Project Completed : 2020
Location : Bangkok
Application : CWS
Pipe Series : SDR 11
Remark : Newly Built



- Project** : TRR RAMA3
Type : Office Building
Project Completed : 2020
Location : Bangkok
Application : CWS
Pipe Series : SDR 11, SDR 6
Remark : Newly Built



- Project** : BANGKOK INSURANCE BUILDING
Type : Office Building
Project Completed : 2020
Location : Bangkok
Application : CWS
Pipe Series : SDR 6
Remark : Renovated



- Project** : HEAD OFFICE, KIATNAKIN PHATRA BANK
Type : Office Building
Project Completed : 2020
Location : Bangkok
Application : Branch CWS
Pipe Series : SDR 11, SDR 6
Remark : Renovated



- Project** : CHIA TAI
Type : Office Building, 15 floors
Project Completed : 2020
Location : Bangkok
Application : Branch CWS
Pipe Series : SDR 11
Remark : Newly Built



- Project** :: BANK OF THAILAND
Type : Office Building
Project Completed : 2020
Location : Nakhon Pathom
Application : CWS
Pipe Series : SDR 11
Remark : Renovated



- Project** : CIMB BANK
Type : Office Building
Project Completed : 2019
Location : Bangkok
Application : CWS
Pipe Series : SDR 6
Remark : Renovated



- Project** : SINGHA COMPLEX
Type : Office Building, Department Store 27, 4 floors
Project Completed : 2019
Location : Bangkok
Application : CWS
Pipe Series : SDR 11
Remark : Newly Built



- Project** : NATIONAL SCIENCE AND TECHNOLOGY
 DEVELOPMENT AGENCY (สวทช.)
Type : Office Building
Project Completed : 2019
Location : Bangkok
Application : CWS
Pipe Series : SDR 11
Remark : Renovated



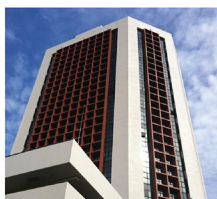
- Project** : THAIBEV
Type : Office Building
Project Completed : 2019
Location : Bangkok
Application : CWS
Pipe Series : SDR 11, SDR 6
Remark : Renovated



- Project** : SOFTWARE PARK
Type : Office Building
Project Completed : 2019
Location : Bangkok
Application : CWS
Pipe Series : SDR 11, SDR 6
Remark : Renovated



Project : SHELL THAILAND
Type : Office Building
Project Completed : 2019
Location : Bangkok
Application : CWS, Chiller
Pipe Series : SDR 11, SDR 6
Remark : Renovated



Project : NATIONAL HOUSING AUTHORITY
Type : Office Building
Project Completed : 2019
Location : Bangkok
Application : CWS, Chiller
Pipe Series : SDR 11, SDR 6
Remark : Newly Built



Project : SIRIPINYO BUILDING
Type : Office Building, 18 floors
Project Completed : 2018
Location : Bangkok
Application : CWS
Pipe Series : SDR 11, SDR 6
Remark : Renovated



Project : BIOTEC
Type : Office Building
Project Completed : 2018
Location : Bangkok
Application : CWS
Pipe Series : SDR 11, SDR 6
Remark : Renovated



Project : KING POWER MAHANAKHON
Type : Office Building, 78 floors
Project Completed : 2018
Location : Bangkok
Application : CWS
Pipe Series : SDR 11
Remark : Newly Built



Project : M-TOWER SUKHUMVIT 62
Type : Office Building, 21 floors
Project Completed : 2017
Location : Bangkok
Application : CWS, HWS
Pipe Series : SDR 11, SDR 6
Remark : Newly Built



Project : PEARL BANGKOK
Type : Office Building, 25 floors
Project Completed : 2016
Location : Bangkok
Application : CWS, HWS
Pipe Series : SDR 11, SDR 6
Remark : Newly Built



Project : MEGA FOODWALK, BANGNA
Type : Department Store, 3 floors
Project Completed : 2021
Location : Samut Prakan
Application : CWS
Pipe Series : SDR 11, SDR 6
Remark : Newly Built



Project : DECATHLON CHIANG MAI
Type : Department Store
Project Completed : 2021
Location : Chiang Mai
Application : CWS
Pipe Series : SDR 11
Remark : Newly Built



Project : UNION MALL
Type : Department Store, 5 floors
Project Completed : 2020
Location : Bangkok
Application : CWS
Pipe Series : SDR 11, SDR 6
Remark : Renovated



Project : ROBINSON BANGKHAE
Type : Department Store
Project Completed : 2020
Location : Bangkok
Application : CWS
Pipe Series : SDR 11
Remark : Renovated



Project : ICON SIAM
Type : Department Store, 8 floors
Project Completed : 2020
Location : Bangkok
Application : CWS
Pipe Series : SDR 11
Remark : Newly Built



Project : BIG C SAIMAI
Type : Department Store
Project Completed : 2020
Location : Bangkok
Application : CWS
Pipe Series : SDR 11
Remark : Renovated



Project : PANTIP PRATUNAM
Type : Department Store
Project Completed : 2019
Location : Bangkok
Application : CWS
Pipe Series : SDR 11
Remark : Renovated



Project : GATEWAY BANGSUE
Type : Department Store
Project Completed : 2019
Location : Bangkok
Application : CWS
Pipe Series : SDR 11, SDR 6
Remark : Newly Built



Project : THE COMMONS SALADAENG
Type : Department Store, 3 floors
Project Completed : 2019
Location : Bangkok
Application : CWS
Pipe Series : SDR 11
Remark : Newly Built



Project : MIXT CHATUCHAK
Type : Department Store, 5 floors
Project Completed : 2019
Location : Bangkok
Application : CWS
Pipe Series : SDR 11
Remark : Newly Built



Project : MEGA BANGNA PLOT D
Type : Department Store, 3 floors
Project Completed : 2019
Location : Bangkok
Application : CWS
Pipe Series : SDR 11
Remark : Newly Built



- Project** : TERMINAL 21 PATTAYA, GRANDE CENTRE POINT
Type : Department Store 6 Floors, Hotel 32 Floors
Project Completed : 2019
Location : Chonburi
Application : CWS
Pipe Series : SDR 11
Remark : Newly Built



- Project** : SAMYAN MITRTOWN
Type : Department Store, 6 floors
Project Completed : 2019
Location : Bangkok
Application : CWS
Pipe Series : SDR 11
Remark : Newly Built



- Project** : IKEA BANGYAI
Type : Department Store, 4 floors
Project Completed : 2018
Location : Nonthaburi
Application : CWS, HWS
Pipe Series : SDR 11, SDR 6
Remark : Newly Built



- Project** : AEC MARKET
Type : Department Store, 2 floors
Project Completed : 2018
Location : Phra Nakhon Sri Ayutthaya
Application : CWS
Pipe Series : SDR 11, SDR 6
Remark : Newly Built



- Project** : CENTRAL RAMA 3
Type : Department Store, 7 floors
Project Completed : 2018
Location : Bangkok
Application : CWS
Pipe Series : SDR 11
Remark : Renovated



- Project** : ZPELL RANGSIT
Type : Department Store, 7 floors
Project Completed : 2015
Location : Pathum Thani
Application : CWS, HWS
Pipe Series : SDR 11, SDR 6
Remark : Newly Built



- Project** : ศูนย์สุขภาพสัตว์ด้วยคำ คณะสัตวแพทยศาสตร์ มหาวิทยาลัยเชียงใหม่
Type : Hospital, 4 floors
Project Completed : Under Construction
Location : Chiang Mai
Application : CWS
Pipe Series : SDR 11, SDR 6
Remark : Newly Built



- Project** : โรงพยาบาลสูงเม่น
Type : Hospital, 5 floors
Project Completed : 2021
Location : Phrae
Application : CWS
Pipe Series : SDR 11, SDR 6
Remark : Newly Built



Project : โรงพยาบาลพูนวิทย์
Type : Hospital
Project Completed : 2020
Location : Uttaradit
Application : CWS
Pipe Series : SDR 11
Remark : Newly Built



Project : โรงพยาบาลสวนดอก
Type : Hospital, 8 floors
Project Completed : 2020
Location : Chiang Mai
Application : CWS
Pipe Series : SDR 11, SDR 6
Remark : Newly Built



Project : โรงพยาบาลเชียงใหม่ประจักษ์พรเกียรติ
Type : Hospital, 6 floors
Project Completed : 2020
Location : Chiang Rai
Application : CWS
Pipe Series : SDR 11, SDR 6
Remark : Newly Built



Project : โรงพยาบาลปิ่นางทอง
Type : Hospital
Project Completed : 2020
Location : Bangkok
Application : CWS
Pipe Series : SDR 11
Remark : Renovated



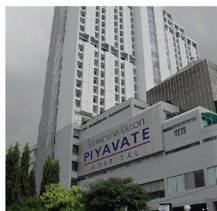
Project : โรงพยาบาลหล่มสัก
Type : Hospital, 6 floors
Project Completed : 2020
Location : Phetchabun
Application : CWS
Pipe Series : SDR 11, SDR 6
Remark : Newly Built



Project : โรงพยาบาลลำพูน
Type : Hospital, 6 floors
Project Completed : 2020
Location : Lamphun
Application : CWS
Pipe Series : SDR 11, SDR 6
Remark : Newly Built



Project : โครงการปรับปรุงห้องผ่าตัดอวัยวะ
 มหาวิทยาลัยธรรมศาสตร์
Type : Hospital
Project Completed : 2019
Location : Pathum Thani
Application : CWS
Pipe Series : SDR 6
Remark : Renovated



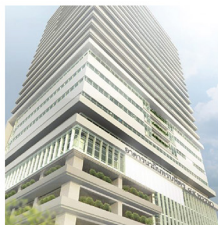
Project : โรงพยาบาลปิยะเวท
Type : Hospital, 27 floors
Project Completed : 2019
Location : Bangkok
Application : CWS
Pipe Series : SDR 11
Remark : Renovated



- Project** : โรงพยาบาลเกษมราษฎร์ อินเตอร์เนชั่นแนล รัตนาธิเบศร์
- Type** : Hospital, 10 floors
- Project Completed** : 2019
- Location** : Bangkok
- Application** : CWS
- Pipe Series** : SDR 11
- Remark** : Renovated



- Project** : โรงพยาบาลวิชัยยุทธ
- Type** : Hospital, 10 floors
- Project Completed** : 2019
- Location** : Bangkok
- Application** : CWS
- Pipe Series** : SDR 11
- Remark** : Renovated



- Project** : โรงพยาบาลศิริราช อาคารนวัตกรรมพิเศษ 84 พรรษา
- Type** : Hospital, 25 floors
- Project Completed** : 2019
- Location** : Bangkok
- Application** : CWS, HWS
- Pipe Series** : SDR 11, SDR 6
- Remark** : Newly Built



- Project** : โรงพยาบาลเทพธารินทร์
- Type** : Hospital, 17 floors
- Project Completed** : 2018
- Location** : Bangkok
- Application** : CWS, Chiller
- Pipe Series** : SDR 11, SDR 6
- Remark** : Renovated



Project : โรงพยาบาลชลประทาน
Type : Hospital, 6 floors
Project Completed : 2018
Location : Bangkok
Application : CWS
Pipe Series : SDR 11
Remark : Renovated



Project : THAI STANLEY (TNP)
Type : Manufacturer, 2 floors
Project Completed : 2020
Location : Pathum Thani
Application : CWS
Pipe Series : SDR 11
Remark : Newly Built



Project : DENSO
Type : Manufactory
Project Completed : 2020
Location : Chachoengsao
Application : CHWS
Pipe Series : SDR 11, SDR 6
Remark : Newly Built



Project : โรงงานขยายเพิ่มภาค
Type : Manufactory
Project Completed : 2020
Location : Pathum Thani
Application : Chiller
Pipe Series : SDR 11
Remark : Newly Built



- Project** : PERFECT COMPANION GROUP (PCG)
Type : Manufactory, 2 floors
Project Completed : 2020
Location : Samut Prakan
Application : CWS
Pipe Series : SDR 11
Remark : Newly Built



- Project** : JD FOOD
Type : Manufactory
Project Completed : 2019
Location : Bangkok
Application : CWS
Pipe Series : SDR 11, SDR 6
Remark : Newly Built



- Project** : CPRAM RECRUIT PATHUMTHANI
Type : Manufactory, 3 floors
Project Completed : 2019
Location : Pathum Thani
Application : CWS, HWS
Pipe Series : SDR 11, SDR 6
Remark : Newly Built



- Project** : FUJI ELECTRIC PHASE 3
Type : Manufactory, 6 floors
Project Completed : 2019
Location : Pathum Thani
Application : CWS
Pipe Series : SDR 11
Remark : Newly Built



Project : TES NEW FACTORY
Type : Manufactory
Project Completed : 2019
Location : Pathum Thani
Application : CWS
Pipe Series : SDR 11
Remark : Newly Built



Project : ASAHI
Type : Manufactory, 4 floors
Project Completed : 2019
Location : Chonburi
Application : CWS
Pipe Series : SDR 11
Remark : Newly Built



Project : AMAGASAKI PIPE (THAILAND) (TAPS)
Type : Manufactory, 2 floors
Project Completed : 2019
Location : Chonburi
Application : CWS
Pipe Series : SDR 11
Remark : Newly Built



Project : TOYOTA DAIHATSU ENGINEERING
 & MANUFACTURING
Type : Manufactory
Project Completed : 2016
Location : Samut Prakan
Application : CWS
Pipe Series : SDR 11
Remark : Renovated



- Project** : กลุ่มอาคารหอพัก มหาวิทยาลัยราชภัฏเชียงใหม่ (สลง)
Type : Academy, 6 floors
Project Completed : 2020 & 2021
Location : Chiang Mai
Application : CWS
Pipe Series : SDR 11, SDR 6
Remark : Newly Built



- Project** : อาคารกีฬาอเนกประสงค์
 มหาวิทยาลัยราชภัฏนครสวรรค์
Type : Academy, 2 floors
Project Completed : 2020
Location : Nakhon Sawan
Application : CWS
Pipe Series : SDR 11
Remark : Newly Built



- Project** : โรงเรียนกีฬานครสวรรค์
Type : Academy
Project Completed : 2020
Location : Nakhon Sawan
Application : CWS
Pipe Series : SDR 11
Remark : Newly Built



- Project** : อาคารผู้สูงอายุ มหาวิทยาลัยนครสวรรค์
Type : Academy, 6 floors
Project Completed : 2020
Location : Phitsanulok
Application : CWS
Pipe Series : SDR 11, SDR 6
Remark : Newly Built



Project : WELLINGTON COLLEGE INTERNATIONAL BANGKOK
Type : Academy, 3 floors
Project Completed : 2019
Location : Bangkok
Application : CWS
Pipe Series : SDR 11, SDR 6
Remark : Newly Built



Project : KMUTT LEARNING EXCHANGE (LX)
Type : Academy
Project Completed : 2019
Location : Bangkok
Application : CWS
Pipe Series : SDR 11, SDR 6
Remark : Newly Built



Project : อาคารส่วนแสดงนักล้า สวนสัตว์เชียงใหม่
Type : 2 floors
Project Completed : 2021
Location : Chiang Mai
Application : CWS
Pipe Series : SDR 11, SDR 6
Remark : Renovated



Project : หอพักกรมรถถัง
Type : หอพัก 3 ชั้น
Project Completed : 2021
Location : Samut Prakan
Application : CWS
Pipe Series : SDR 11
Remark : Newly Built



Project : BANG SUE GRAND STATION (สถานีกลางบางซื่อ)
Type : Train Station
Project Completed : 2021
Location : Bangkok
Application : CWS
Pipe Series : SDR 11
Remark : Newly Built



- Project** : บ้านพักข้าราชการตุลาการศาลพิษณุโลก
Type : 6 floors
Project Completed : 2021
Location : Phitsanulok
Application : CWS
Pipe Series : SDR 11
Remark : Newly Built



- Project** : บ้านพักผู้บริหารเหมืองแม่เมาะ
Type : 2 floors
Project Completed : 2020
Location : Lampang
Application : CWS
Pipe Series : SDR 11, SDR 6
Remark : Newly Built



- Project** : บ่อน้ำพุร้อนพระร่วง
Type : เดินท่อจ่ายน้ำร้อน
Project Completed : 2020
Location : Kamphaeng Phet
Application : CWS
Pipe Series : SDR 6
Remark : Renovated



- Project** : ศาลาอายุ จังหวัดเชียงใหม่
Type : 2 floors
Project Completed : 2020
Location : Chiang Mai
Application : CWS
Pipe Series : SDR 11, SDR 6
Remark : Newly Built



- Project** : THE PARQ
Type : Mixed-Use, 16 floors
Project Completed : 2020
Location : Bangkok
Application : Branch CWS
Pipe Series : SDR 11
Remark : Newly Built



Project : การเคหะแห่งชาติ
Type : 4 floors
Project Completed : 2020
Location : Kanchanaburi
Application : CWS
Pipe Series : SDR 11
Remark : Newly Built



Project : BENZ BKK GROUP
Type : Showroom, 2 floors
Project Completed : 2020
Location : Bangkok
Application : CWS
Pipe Series : SDR 11
Remark : Newly Built



Project : BONMARCHE MARKET PARK
Type : Market
Project Completed : 2020
Location : Bangkok
Application : Chiller
Pipe Series : SDR 11
Remark : Newly Built



Project : KASIKORN BANK BANG PAKONG
Type : Bank
Project Completed : 2020
Location : Chachoengsao
Application : HWS, CWS
Pipe Series : SDR 11, SDR 6
Remark : Newly Built



Project : วังทองอุทุมพร
Type : 2 floors
Project Completed : 2020
Location : Bangkok
Application : Chiller
Pipe Series : SDR 6
Remark : Renovated



- Project** : อาคารกรมสวัสดิการทหารบก รัชดาภิเษก
Type : หน่วยงานราชการ, 7 floors
Project Completed : 2019
Location : Bangkok
Application : CWS
Pipe Series : SDR 11
Remark : Newly Built



- Project** : ARI HILLS
Type : Mixed-Use, 34 floors
Project Completed : 2019
Location : Bangkok
Application : Branch CWS
Pipe Series : SDR 11, SDR 20
Remark : Newly Built



- Project** : IMPACT ARENA, MUANG THONG THANI
Type : Exhibition and Convention Center
Project Completed : 2019
Location : Bangkok
Application : CWS, Chiller
Pipe Series : SDR 11, SDR 6
Remark : Renovated



- Project** : MAYFAIR MARRIOTT EXECUTIVE APARTMENTS
Type : Hotel
Project Completed : 2019
Location : Bangkok
Application : CWS
Pipe Series : SDR 11
Remark : Renovated



Project : MOONSTAR STUDIO
Type : Studio
Project Completed : 2019
Location : Bangkok
Application : Chiler
Pipe Series : SDR 11, SDR 6, SDR 7.4
Remark : Renovated



Project : TRANG AIRPORT
Type : Airport
Project Completed : 2018
Location : Trang
Application : CWS
Pipe Series : SDR 11
Remark : Renovated



Project : ELEPHANT TOWER
Type : Mixed-Use, 32 floors
Project Completed : 2018
Location : Bangkok
Application : CWS
Pipe Series : SDR 6
Remark : Renovated



Project : PRIME REALTY RAMKHAMHAENG
Type : Apartment, 8 floors
Project Completed : 2016
Location : Bangkok
Application : CWS, HWS
Pipe Series : SDR 11, SDR 6
Remark : Renovated



Project : BITEC BANGNA PHASE 2
Type : Exhibition Centre, 3 floors
Project Completed : 2016
Location : Samut Prakan
Application : CWS
Pipe Series : SDR 11
Remark : Newly Built

มาตรฐานส่งออกเยอรมนี 

คุณภาพกว่า 2 ทศวรรษ ที่โครงการชั้นนำไว้วางใจ



บริษัท ไทย พีพี-อาร์ จำกัด | THAI PP-R Co.,Ltd.

177/1 อาคาร BUI ชั้น 21 ถ.สุรวงศ์ แขวงสุริยวงศ์ เขตบางรัก กรุงเทพฯ 10500

177/1 BUI Building 21 Fl. Surawong Rd. Suriyawong Bangrak, Bangkok 10500 Thailand.

Tel. (+66) 2634 9981-4 Fax (+66) 2634 7150

www.thaippr.com

หมายเหตุ : โครงการดังกล่าวในเล่มนี้จัดทำขึ้นโดยโครงการที่ดำเนินการโดย บริษัท ไทย พีพี-อาร์ จำกัด เท่านั้น ไม่รวมถึงโครงการอื่นที่ ผู้เขียนจำหน่ายของบริษัทดำเนินการ

สงวนลิขสิทธิ์ พ.ศ.2550 โดย บริษัท ไทย พีพี-อาร์ จำกัด

ห้ามลอกเลียนแบบทั้งหมด หรือส่วนหนึ่งส่วนใดของหนังสือเล่มนี้ รวมทั้งการฉีกกัน ตีตลาด ใช้งานโดยไม่ได้รับอนุญาต หรือการนำข้อมูลไปเผยแพร่โดยไม่ได้รับอนุญาต